



## TMP Solutions

Unit 6 Trident Drive, Wednesbury,  
West Midlands. WS10 7XB

0208 744 8201  
[www.tmp.solutions](http://www.tmp.solutions)



# Metro 2.0

Retro-reflective self-righting bollard  
Perfect for urban and rural applications

**PassiveSAFE**<sup>®</sup>

Rebounds on impact and fully compliant  
to BS EN 12767:2019

## A traditional rounded shape traffic bollard with zero maintenance

A non-illuminated and passively safe bollard that is fully compliant for use on the UK highways. The standard Metro comes complete with a D610 Keep Left roundel on the front and plain black back, but there are many other variants available.

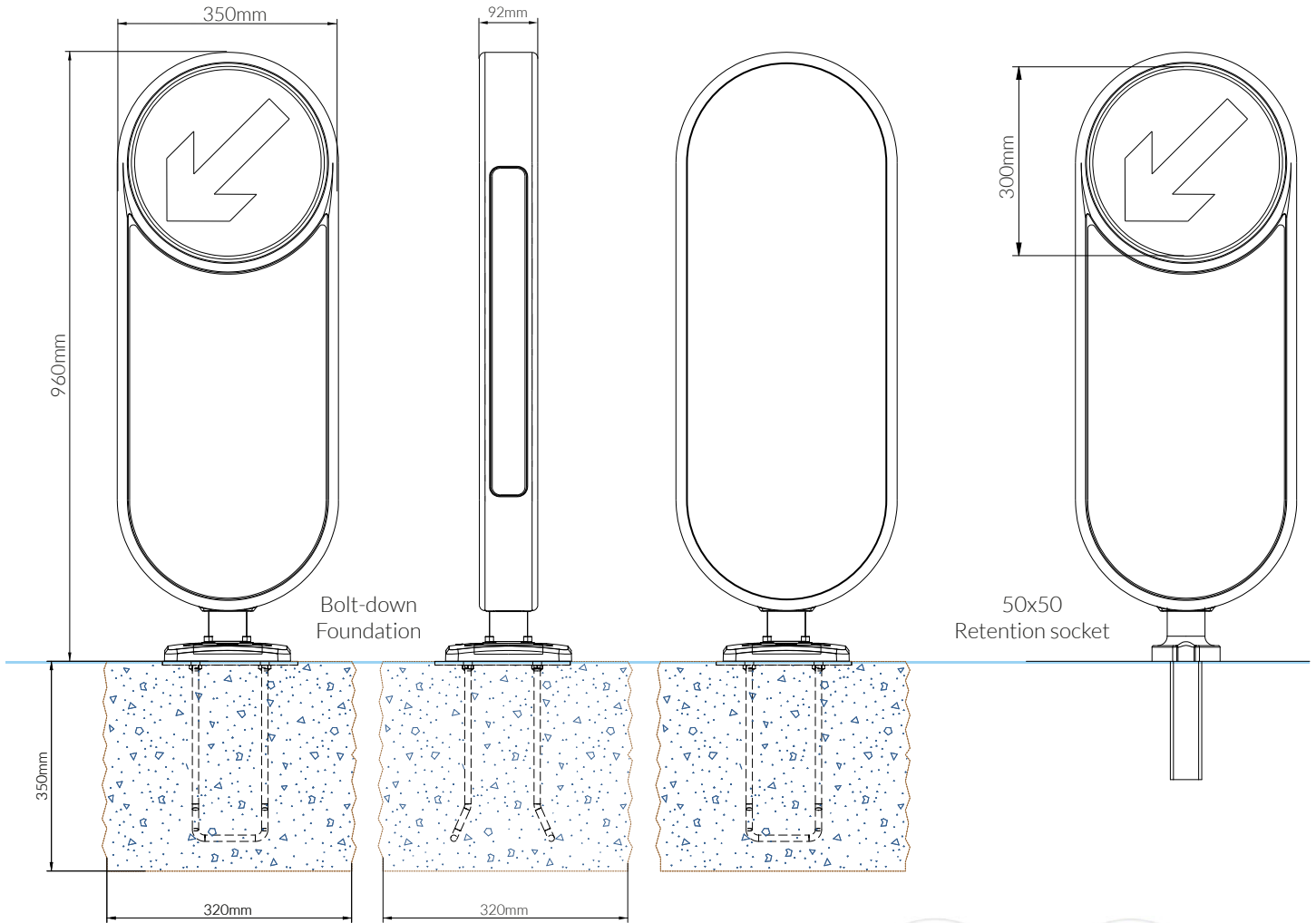
- Full 360° visibility
- Easy to install
- Single or double aspect
- 100% Recyclable shell
- BS 8442:2015 compliant
- All reflective material meets BS 8408:2005
- BS EN 12767:2019 Passively Safe
- 12 Year 3M backed delamination warranty

## All TMP RSRBs are passively safe

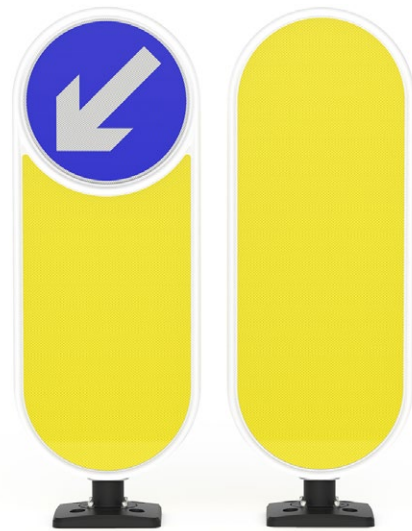
The classical TMP Metro traffic bollard has all the latest performance qualities of the rest of the range of RSRBs but with a more traditional rounded shape. Perfect for placing in urban or rural situations. The Metro bollard has been designed to be installed without the need for electrical illumination making it quick and easy to install. The advanced retro-reflective panels on the Metro RSRB harnesses the light from vehicle headlights to illuminate the sign face without electricity or harmful carbon emissions.

Not only is it safe for the environment, but the Metro bollard is also passively safe to road users. The unique bollard base and durable polypropylene construction ensure the bollard will yield to impact but rebound back to an upright position.

# Specifications



<b>Material</b>	Rotationally moulded polyethylene
<b>Colour</b>	Black / White
<b>Protection</b>	Recessed reflective panels & anti-vandal fixings
<b>Corrosive Resistance</b>	SP1/SP2
<b>Installation Options</b>	Foundation cage, retention socket or base light conversion
<b>Reflective Material</b>	3M Diamond Grade DG3 Series 4000 Fully compliant with Class R3B, EN12899-1:2007
<b>Sign Face</b>	300mm (single or double sided)
<b>Front Reflector</b>	305mm wide x 558mm high
<b>Rear Reflector (optional)</b>	305mm wide x 842mm high
<b>Side Reflector</b>	50mm wide
<b>BS8442:2015</b>	Fully compliant
<b>BS EN 12767:2007</b>	100:NE:4
<b>BS EN 12767:2019</b>	100-NE-A-R-NS-MD-0 70-NE-A-R-NS-MD-0 50-NE-A-R-NS-MD-0
<b>Warranty</b>	12yr Delamination warranty backed by 3M 3yr Manufacturer's warranty
<b>Recyclable</b>	Yes



## Zero Maintenance

The Metro needs no additional maintenance. As with all devices installed on the highway, external surfaces should be periodically cleaned with diluted mild detergent.

## Versatile Installation



Foundation Cage



Retention Socket



Base Light Conversion



Manufactured in the UK

