



# City Post

## Installation Guide

This is a visual guide to aid in the installation of the City Post Anchor Cup system. This Document covers the recommended installation procedure for installation.

### City Post assembly:

The complete City Post assembly includes;

- Post - the taped final assembly
- Anchor Cup-Aluminium moulded Anchor that will be embedded into the roadway.
- Epoxy Shield-Clear sheet used to prevent epoxy from making contact with the post.
- Rubber Gasket-5mm rubber ring to seal the base and anchor cup.

### You will need:

#### Core drill:

Any drill capable of accepting and centering a 52mm minimum sized core bit.

#### Core bit:

Any masonry bit capable of creating cores minimum of 52mm in diameter. Suppliers such as HILTI, Grainger and Bosch will have these bits.

#### Depth gauge:

A disposable tool used as a stopping point for the epoxy fill level; see below.

#### Protective equipment:

Glasses, latex gloves and a rag for cleaning up.

#### Epoxy/Adhesive:

200ml of epoxy estimated for one post installation.

There are three adhesive systems that we have trialled with good results.

Please refer to the table below, all the times are for a nominal 22°C. Higher temperatures will result in a faster curing time and for lower temperatures, it will take longer.



	Work Time	Cure Time	Dispensing/Application
Pexco Epoxy EA56	8 min	1hr	Hand mixed and Poured
Hilti RE-500 Epoxy	25 min	6.5hrs	Cartridge system/multiple guns
Hilti HY 200A Hybrid (Concrete only)	7 min	30min	Cartridge system/multiple guns



### Preliminary Preparation - Critical for all new installations

Ensure that the epoxy shield and black rubber gasket are installed between the City Post and the anchor cup. Screw down the anchor cup tightly until it stops.

City Post is now ready for the next installation procedure.

## Coring the holes

### Guidance:

The suggested core depth is 75mm. The hole will leave a jagged bottom when the core is broken off. The extra 15mm of depth ensures that the minimum depth of 60mm is achieved.

### Check fit:

Insert the assembled City Post into the dry hole, does it sit level? if not remove more material and recheck.

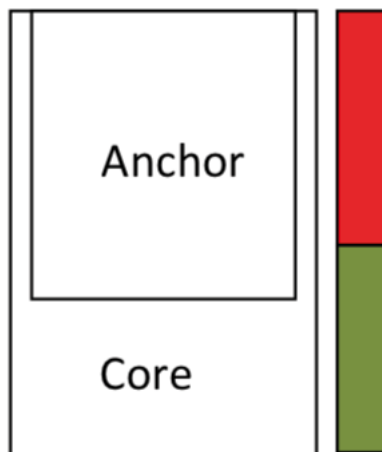
### Clean:

Holes must be free of debris and dust.

## Epoxy filling level

We have created a depth gauge to speed up the installation process, there are several ways to mark the depth but this one is the most effective and simple way. Please refer to the table below, to determine the correct epoxy fill depth for your post.

Core Diameter	52mm	67mm
Stop Fill Depth (SFD) from the top with gasket	45mm	27mm



**Anchor Cup** - set inside the cored hole.

**Stop Fill Depth**- the point the epoxy must not rise above when dispensed into the cored-out hole.

**Epoxy Fill**

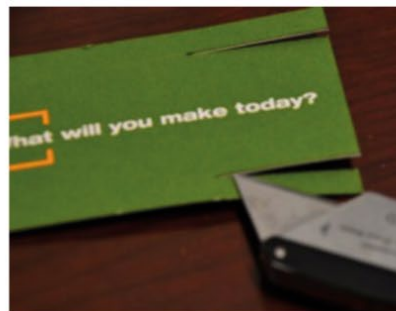
**Core**- Opening into which epoxy and anchor will be installed.

## Making a simple depth gauge tool using a business card.



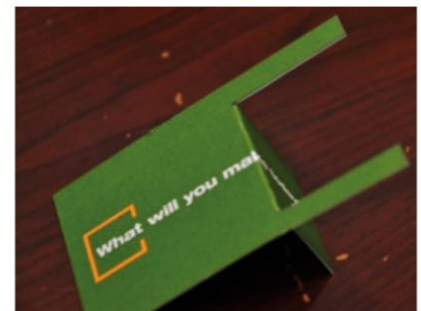
### Layout

Draw two lines to be cut per the SFD dimensions in the table above.



### Cut

Make cuts on the lines.



### Fold

Fold flap back 90°.

The flap of the card should match the Stop Fill Depth required. When filling the core hole with epoxy, stop as soon as contact is made with the edge of the flap that is inserted into the hole.

### Caution Do Not Overfill

Overfilling the core hole can result in the City Post being permanently adhered to the roadway.

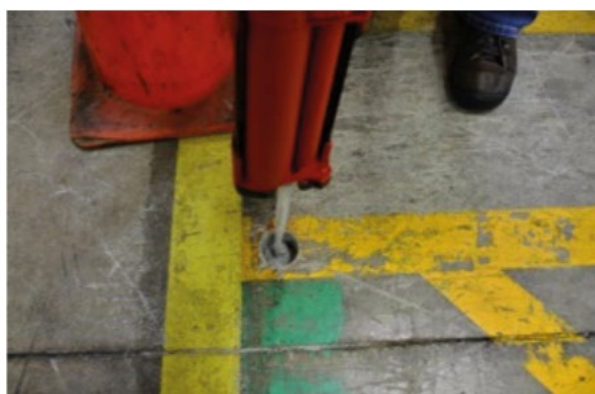
## Installing the anchor cup using the Hilti cartridge system

### Tools :

- Hilti adhesive dispenser
- Hilti adhesive
- Depth gauge
- City Post assembly



Using the adhesive dispenser, evenly distribute the adhesive into the hole to keep air bubbles/pockets to a minimum.



Fill to SFD shown on the table above, by inserting the depth gauge into the hole, and only filling up to gauge to ensure a clean and level installation.



Adhesive contact with the SFD gauge should leave little adhesive on the edge of the flap.

**Caution Do Not Overfill**



## Anchor Cup Insertion

Slowly insert the anchor cup into the adhesive filled hole and twist one full turn. Rotating the post spreads the epoxy evenly around the anchor cup. This is critical to get a good even distribution of epoxy.



Once the final depth is reached no adhesive should be visible around the base. Allowing the anchor and epoxy to set, refer to your manufacturer's direction for cure times.



Once the epoxy has fully cured you can remove the City Post from the anchor cup. If the steps are followed correctly and in the shown sequence, you should have an installation that looks very similar to this.



Finally, tighten down the City Post with the City Post wrench. This tool is also useful to loosen the City Post when it needs to be removed. (Wrench is sold separately)

